



**India Meteorological Department
(Ministry of Earth Sciences)**

NATIONAL BULLETIN NO. 11 (BoB/04/2025)

TIME OF ISSUE: 0900 HOURS IST

DATED: 27.07.2025

FROM: INDIA METEOROLOGICAL DEPARTMENT (FAX NO. 24643965/24699216/24623220)

TO: CONTROL ROOM, NDM, MINISTRY OF HOME AFFAIRS (FAX.NO. 23093750)

CONTROL ROOM NDMA (FAX.NO. 26701729)

CABINET SECRETARIAT (FAX.NO.23012284, 23018638)

PS TO HON'BLE MINISTER FOR S & T AND EARTH SCIENCES (FAX NO.23316745)

SECRETARY, MOES (FAX NO. 24629777)

H.Q. (INTEGRATED DEFENCE STAFF AND CDS) (FAX NO. 23005137/23005147)

DIRECTOR GENERAL, DOORDARSHAN (23385843)

DIRECTOR GENERAL, AIR (23421105, 23421219)

PIB MOES (FAX NO. 23389042)

UNI (FAX NO. 23355841)

D.G. NATIONAL DISASTER RESPONSE FORCE (NDRF) (FAX NO. 26105912, 2436 3260)

DIRECTOR, PUNCTUALITY, INDIAN RAILWAYS (FAX NO. 23388503)

CHIEF SECRETARY, ODISHA (FAX NO. 0674-2536660)

CHIEF SECRETARY, WEST BENGAL (FAX NO. 033-22144328)

CHIEF SECRETARY, GOVT. OF BIHAR (FAX NO. 0612-2217085)

CHIEF SECRETARY, GOVT. OF JHARKHAND (FAX NO. 0651-2400255)

CHIEF SECRETARY, GOVT. OF CHHATTISGARH (FAX NO. 0771-2221206)

CHIEF SECRETARY, GOVT. OF MADHYA PRADESH (FAX NO. 0755-2551521)

CHIEF SECRETARY, GOVT. OF UTTAR PRADESH (FAX NO. 0522-2239283)

CHIEF SECRETARY, GOVT. OF MAHARASHTRA (FAX NO. 022-22028594)

CHIEF SECRETARY, GOVT. OF RAJASTHAN (FAX NO. 0141-2227114)

CHIEF SECRETARY, GOVT. OF GUJARAT (FAX NO. 079-23250305)

Subject: Well marked low pressure area over northwest Madhya Pradesh and neighbourhood

The Depression over east Madhya Pradesh and north Chhattisgarh moved nearly westwards and weakened into a well marked low pressure area over **northwest Madhya Pradesh and neighbourhood** at 0530 hrs IST of today, the 27th July, 2025.

It is very likely to continue to move nearly westwards across northwest Madhya Pradesh and weaken gradually into a low pressure area during next 12 hours.

Warnings:

(i) Rainfall Warning:

Chhattisgarh: Light to moderate rainfall at most places with **heavy rainfall** at isolated places over north Chhattisgarh on 27th-28th July.

East Madhya Pradesh: Light to moderate rainfall at most places with **heavy rainfall** at isolated places **is very** likely during 27th – 28th July.

West Madhya Pradesh: Light to moderate rainfall at most places with **heavy to very heavy rainfall** at isolated places **is very** likely during 27th – 28th July.

Vidarbha: Light to moderate rainfall at most places with **heavy rainfall** at isolated places on 27th July.

Madhya Maharashtra: Light to moderate rainfall at most places with **heavy to very heavy rainfall** at isolated places **is very likely** during 27th – 28th July.

Gujarat region: Light to moderate rainfall at most places with **heavy to very heavy rainfall** at isolated places **is very likely** during 27th – 28th July with **extremely heavy rainfall (≥ 21 cm)** on 27th July.

East Rajasthan: Light to moderate rainfall at most places with **heavy to very heavy rainfall** at isolated places **is very likely** during 27th – 28th July with **extremely heavy rainfall (≥ 21 cm)** on 27th & 28th July.

West Rajasthan: Light to moderate rainfall at most places with **heavy rainfall** at isolated places is very likely on 27th July.

(ii) Impact Expected and Action Suggested due to heavy rainfall (Chhattisgarh, Madhya Pradesh, Vidarbha, Madhya Maharashtra,)

Impact expected:

- ❖ Rain may damage plantation, horticulture and standing crops.
- ❖ Partial damage to vulnerable structures due to rain.
- ❖ Minor damage to kutcha houses/walls, huts and roads due to heavy rain.
- ❖ Road and rail traffic may be affected due to heavy rain.
- ❖ There could be localised landslides, mudslides, landslips, water logging, inundation and flooding over low lying areas.
- ❖ Occasional reduction in visibility due to heavy rainfall.
- ❖ Helicopter services may get affected.

Action suggested:

- ❖ People are advised to keep a watch on the weather for worsening conditions and be ready to move to safer places accordingly.
- ❖ Take safe shelters; do not take shelter under trees, as there could be lightning.
- ❖ In case of expected lightning, unplug electrical/ electronic appliances, immediately, get out of water bodies and keep away from all the objects that conduct electricity.
- ❖ Tourism and recreational activities to be regulated.
- ❖ Helicopter services to be regulated.

This is the last update in association with this system. However, regular bulletin shall continue in association with this system and its remnant by National Weather Forecasting Centre and regional Meteorological Centres.

(DR Pattanaik)
Scientist G, RSMC
IMD New Delhi

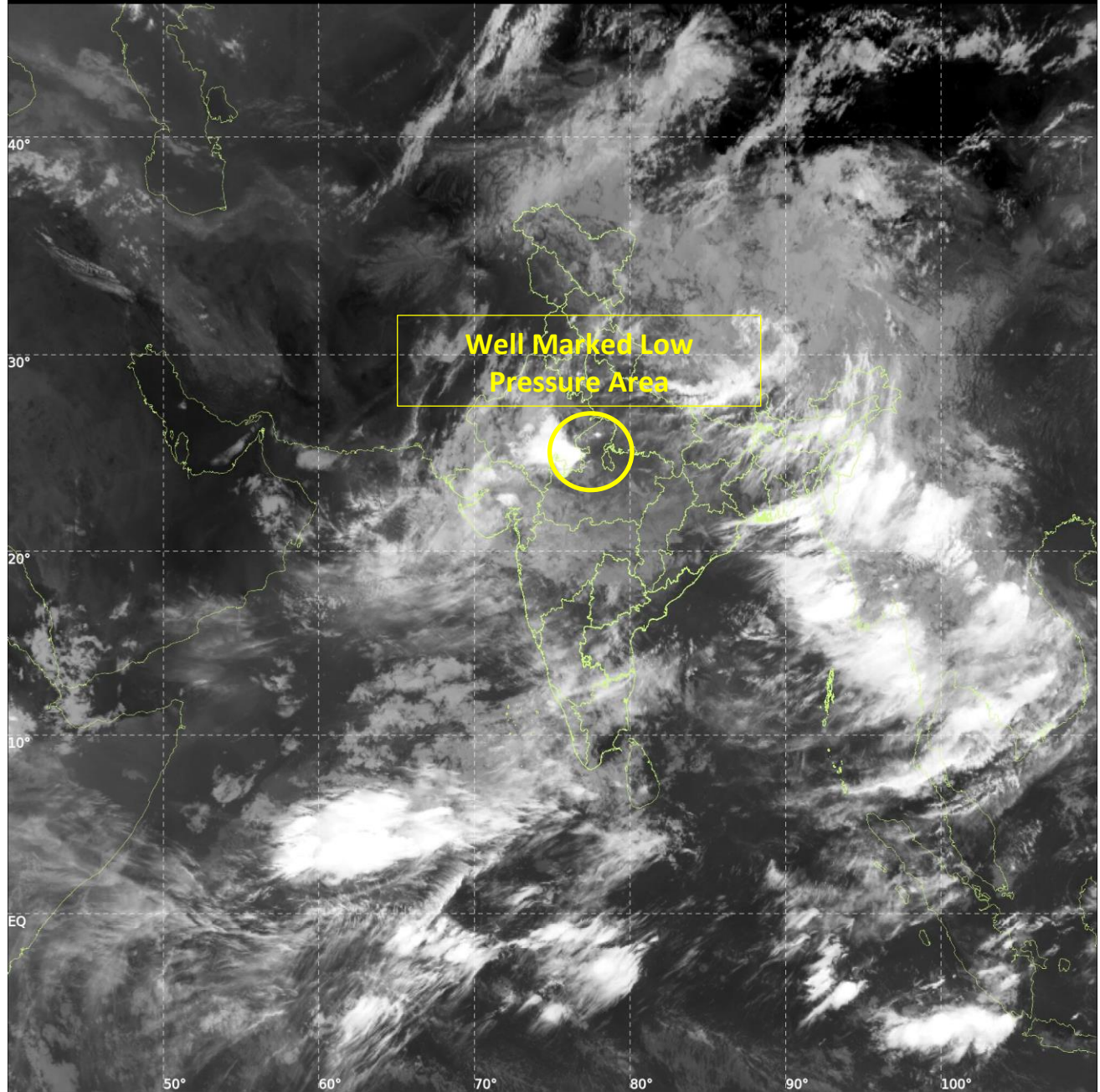
Copy to: ACWC Kolkata /CWC Bhubaneswar/CWC Ahmedabad/Meteorological Centres- Ranchi, Raipur, Bhopal, Lucknow, Jaipur, Mumbai, Nagpur



INSAT-3DS IMG, Thermal Infrared1 Count @ 10.83 μm
GMT:27-07-2025/(0230-0257) IST:27-07-2025/(0800-0827)
L1C MERCATOR (LINEAR STRETCH: 1%)

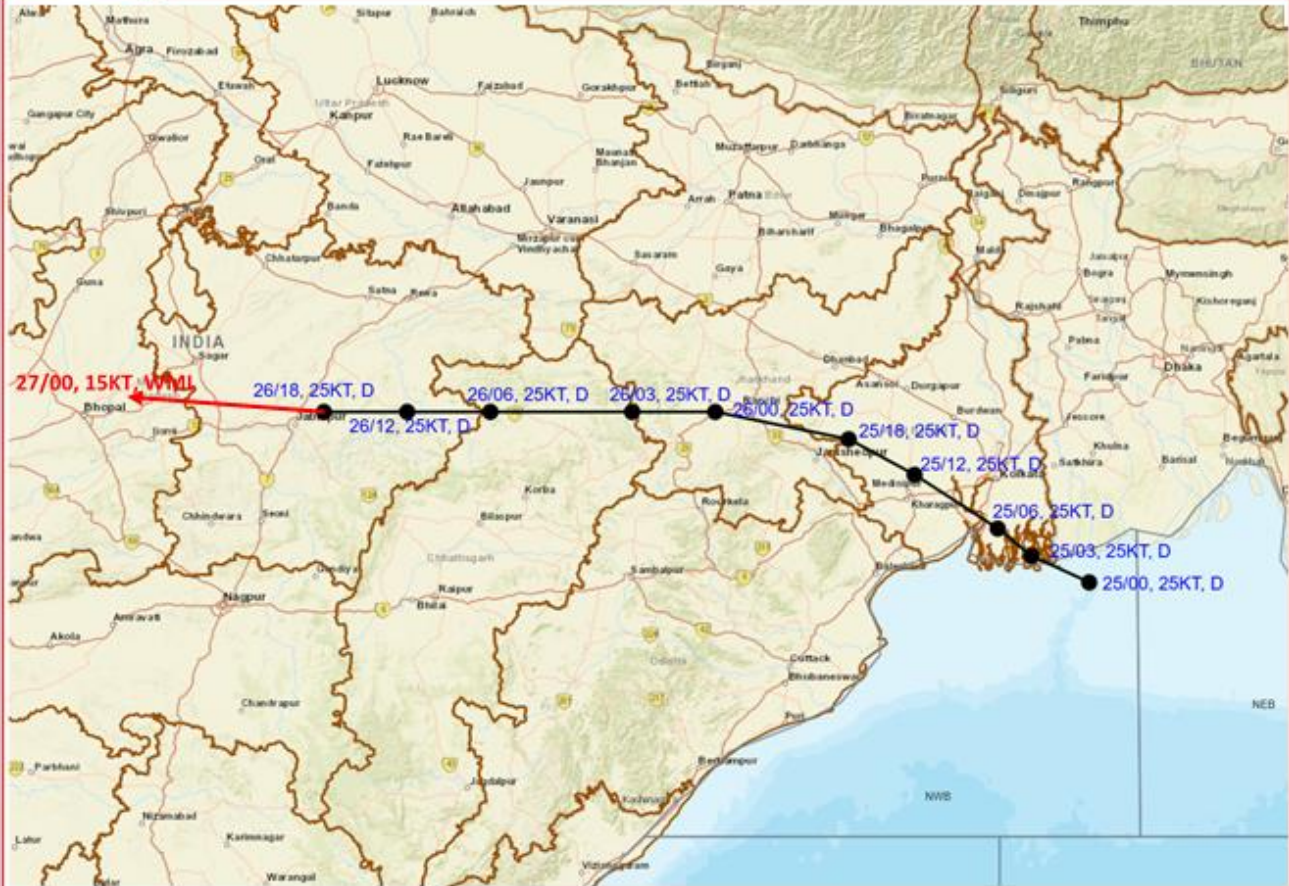
419

913





OBSERVED TRACK OF DEPRESSION OVER NORTHWEST MADHYA PRADESH AND NEIGHBOURHOOD AT 0530 HRS. IST (0000 UTC) OF 27th JULY 2025



DATE/TIME IN UTC

IST=UTC + 0530

L: LOW PRESSURE AREA

WML: WELL MARKED LOW PRESSURE AREA

D: DEPRESSION (17-27 KT)

DD: DEEP DEPRESSION (28-33 KT)

CS: CYCLONIC STORM (34-47 KT)

SCS: SEVERE CYCLONIC STORM (48-63KT)

VSCS: VERY SEVERE CYCLONIC STORM (64-89 KT)

ESCS: EXTREMELY SEVERE CYCLONIC STORM (90-119 KT)

SuCS: SUPER CYCLONIC STORM \geq 120 KT)

1KT=1.85 KMPH

● LESS THAN 34 KT

○ 34-47 KT

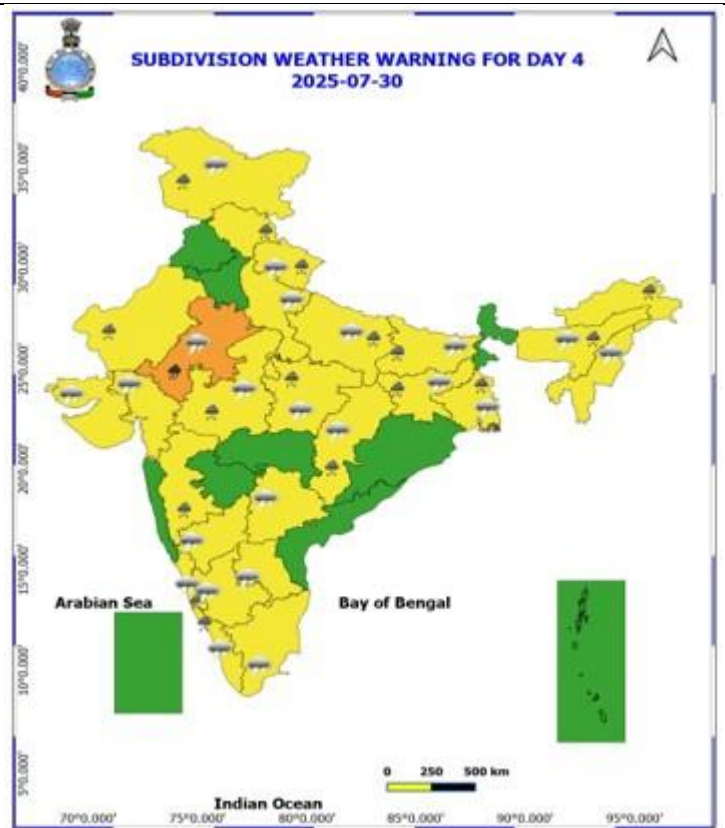
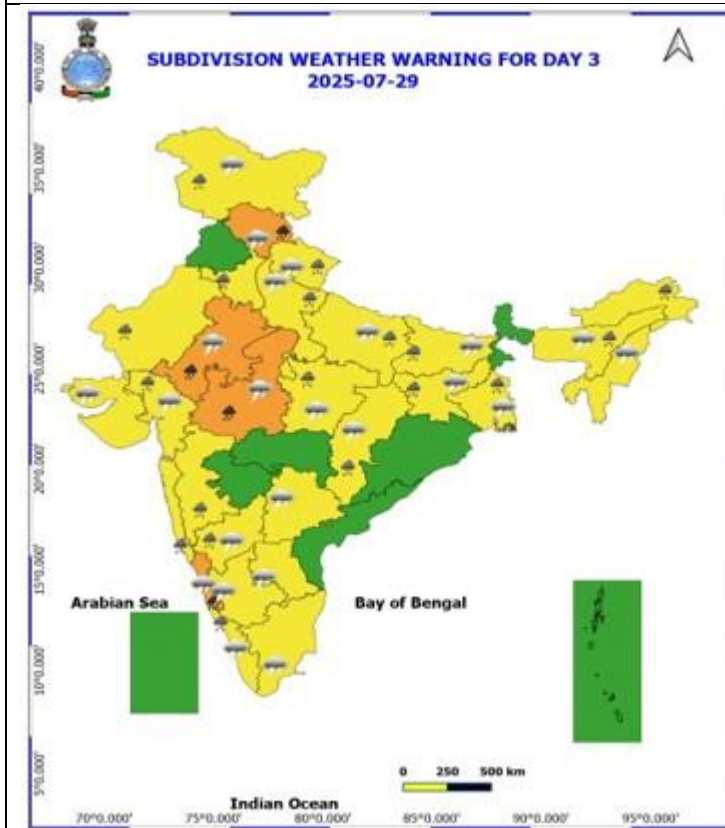
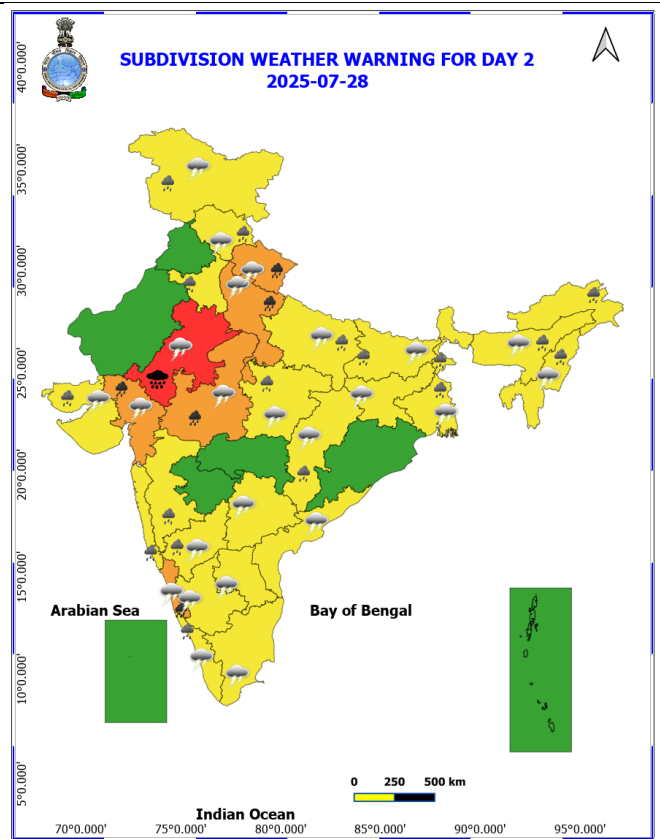
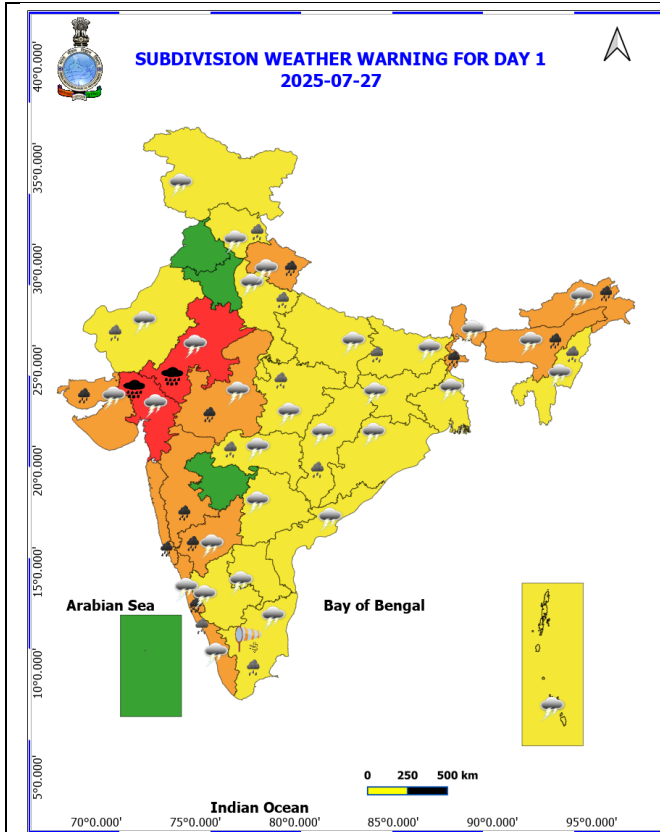
○ \geq 48 KT

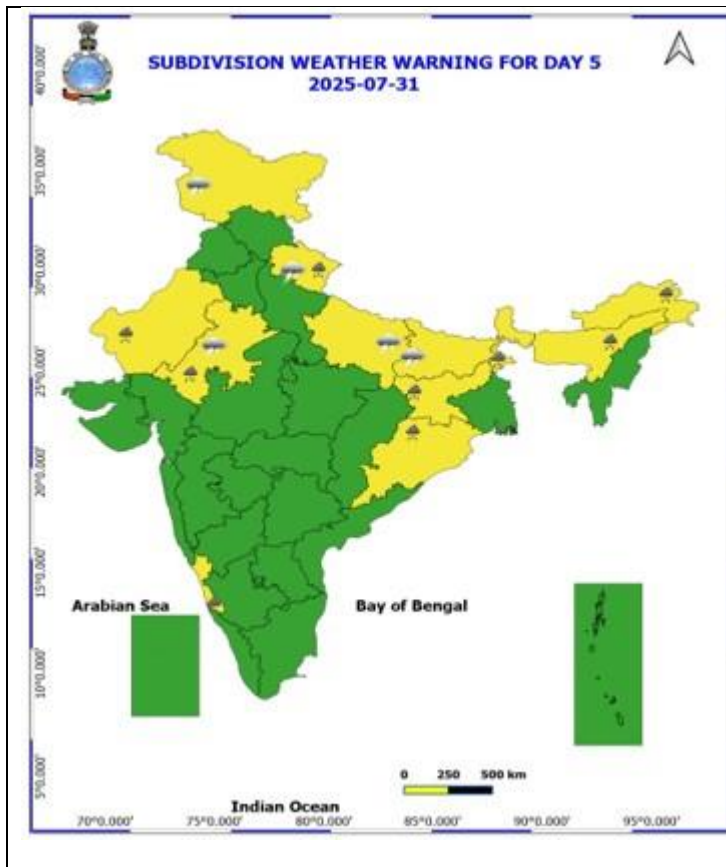
— OBSERVED TRACK

— FORECAST TRACK

▲ CONE OF UNCERTAINTY

Weather Warnings Graphics





COLOUR CODED WARNING

| |
|------------------------------------|
| No Warning (No Action) |
| Watch (Be Aware) |
| Alert (Be Prepared To Take Action) |
| Warning (Take Action) |

Probabilistic Forecast

| Terms | Probability of Occurrence (%) |
|-------------|-------------------------------|
| Unlikely | < 25 |
| Likely | 25 - 50 |
| Very Likely | 50 - 75 |
| Most Likely | > 75 |

Weather Symbols:

- Fog
- Heavy Rain
- Very Heavy Rain
- Extremely Heavy Rain
- Thunder & Lightning
- Hailstorm
- Dust Raising Winds
- Heavy Snow
- Dust Storm
- Heat Wave
- Warm Night
- Hot Day
- Hot & Humid
- Strong Surface Winds
- Cold Wave
- Cold Day
- Ground Frost

* Red colour warning does not mean "Red Alert", Red colour warning means "Take Action".
Forecast and Warning for any day is valid from 0630 hours IST of day till 0630 hours IST of next day.
For more details, kindly visit <https://mausam.india.gov.in> or contact: 011-2434-4599
(Service to the Nation since 1875)

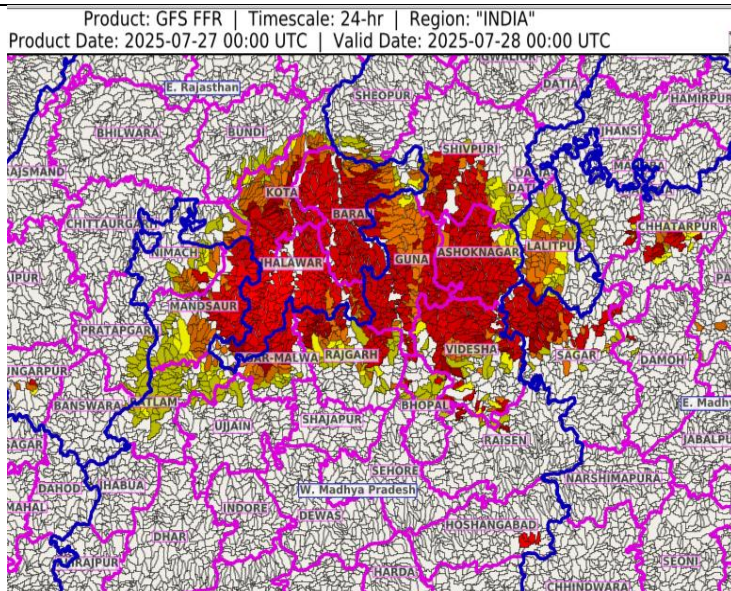
Flash Flood Guidance

24 hours Outlook for the Flash Flood Risk (FFR) till 0530 IST of 28-07-2025 :

Low to Moderate flash flood risk likely over few watersheds & neighbourhoods of following Met Sub-divisions during next 24 hours.

East Rajasthan - Baran, Bundi, Chittaurgarh, Dungarpur, Jhalawar, Kota and Pratapgarh districts.

East Madhya Pradesh - Chhatarpur, Damoh, Panna, Sagar and Tikamgarh district. Adjoining West Madhya Pradesh Met Sub-Tikamgarh, Chhatarpur, Sagar, Damoh, Panna districts. Surface runoff/ Inundation may occur at some fully saturated soils & low-lying areas over Area of Concern (AoC) as shown in map due to expected rainfall occurrence in next 24 hours.



| Flash Flood Threat | Flash Flood Risk |
|---|---|
| High Threat (Take Action) | High Risk (Take Action) |
| Moderate threat (Be Prepared) | Moderate Risk (Be Prepared) |
| Low Threat (Be Updated) | Low Risk (Be Updated) |